

Hélicé

Surface totale : ~288 m²
Surface au sol : ~167 m²
Volume : ~985 m³
Intéressé ? Contactez-nous ici

Etage

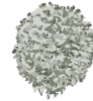
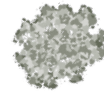
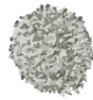
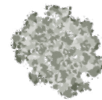
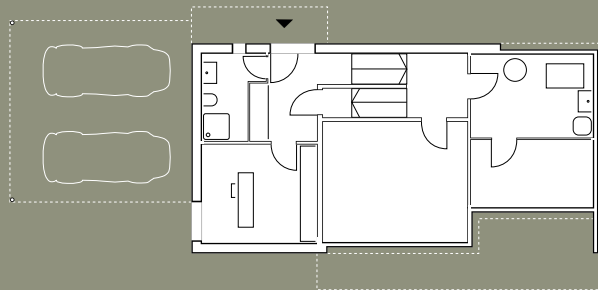
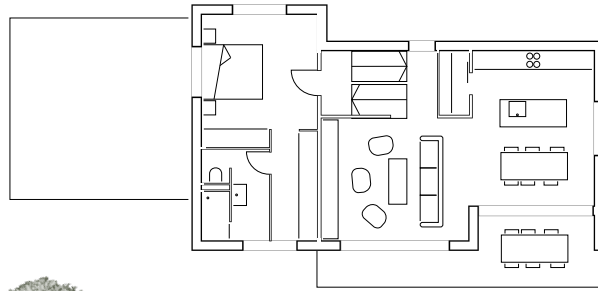
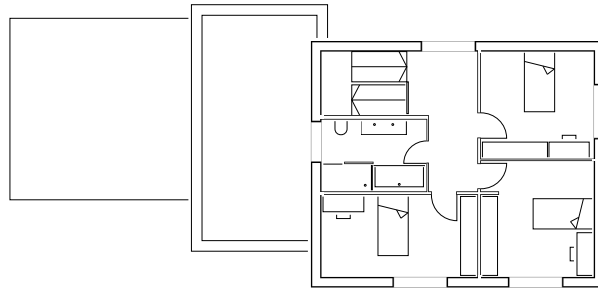
Chambre n°2 : 12.35 m²
Chambre n°3 : 15.30 m²
Chambre n°4 : 16.45 m²
Bain : 7.95 m²

Rez-de-chaussée

Cuisine / Coin à manger : 25.20 m²
Séjour : 25.45 m²
Chambre n°1 : 15.65 m²
Douche : 6.65 m²
Dressing : 5.40 m²
Terrasse : 21.10 m²

Sous-sol

Bureau : 12.35 m²
Douche : 4.90 m²
Cave n°1 : 23.00 m²
Cave n°2 : 15.50 m²
Local technique : 11.95 m²
Couvert à voitures : 36.00 m²



2.5

7.5

12.5

espacecimsa

Le Piolet 25
1470 Estavayer-le-Lac

026 663 93 00

www.ecim.ch
info@ecim.ch